



# Millennium City Estate

*A City within A City*





## Two Bedroom Standard (Detached)



Plots: 100ft x 44ft

### Finishing

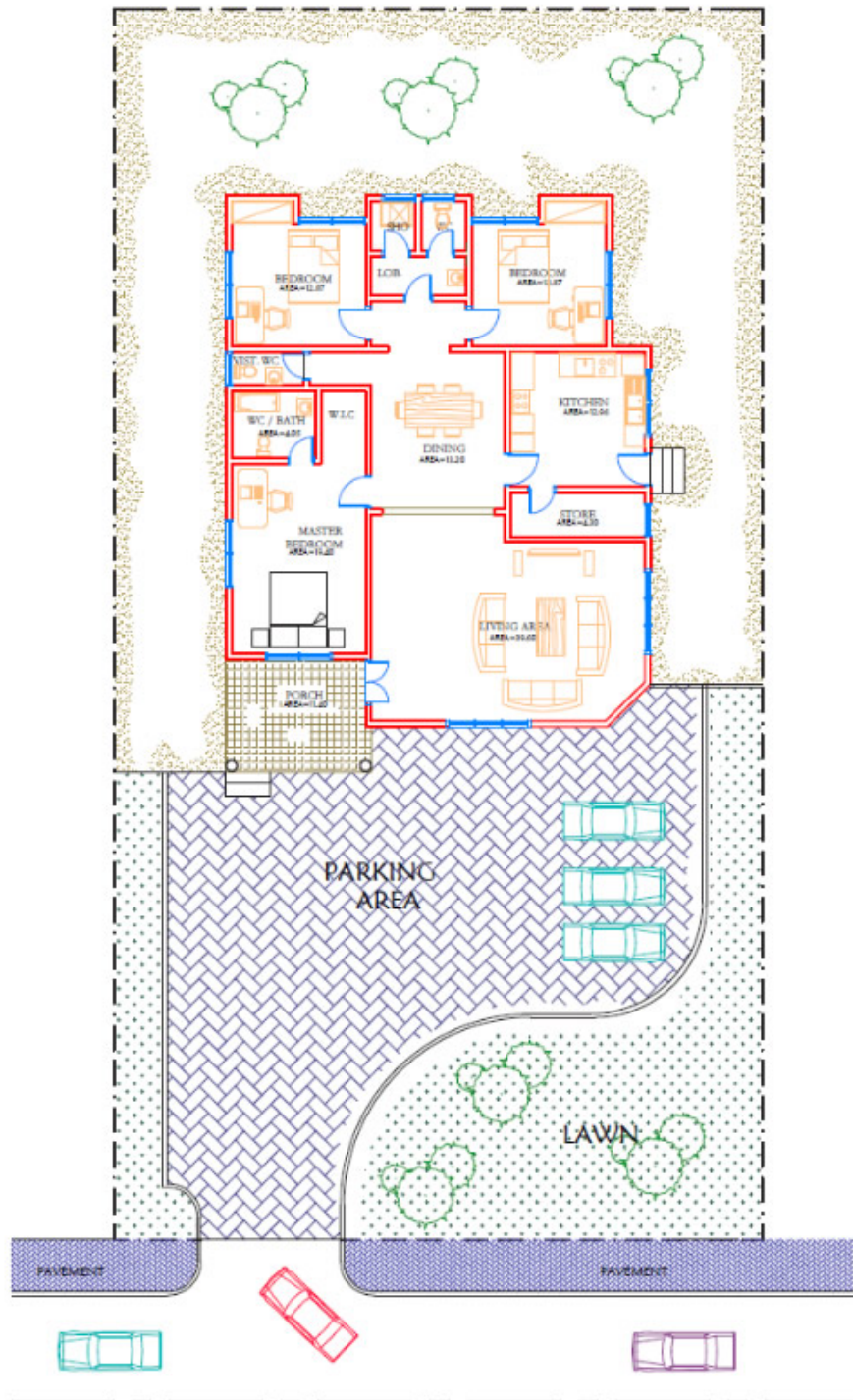
1. Aluzinc roofing sheet
2. Plastic T&G ceiling throughout
3. High quality wooden sprayed panel doors
4. Floor tiles throughout
5. Kitchen/toilet/bathroom walls tiled
6. Kitchen sink provided
7. Naco louvre frames and glass
8. External security doors
9. Provision for built-in wardrobes/kitchen cabinets (*Additional cost for fixing*)
10. Provision for air conditioner connections
11. Provision for water heaters
12. Provision for conduct TV antennas
13. Provision for internet broadband connectivity
14. Provision for built in DSTV connectivity
15. Fence wall with gate
16. Rain gutters
17. Ground levelling with laterite



Millennium City Ltd  
www.millenniumcitygh.com

uksales@millenniumcitygh.com +442084526334  
ussales@millenniumcitygh.com +1 (917)-463-4247

Actual house features may differ slightly from images please focus on finishing list



### 3 BEDROOM STANDARD

FLOOR LAYOUT  
( floor area in m<sup>2</sup> )



Millennium City Ltd  
www.millenniumcitygh.com

uksales@millenniumcitygh.com +442084526334  
ussales@millenniumcitygh.com +1 (917)-463-4247

Actual house features may differ slightly from images please focus on finishing list



## Two Bedroom Executive (Detached)



Plots: 100ft x 44ft

### Finishing

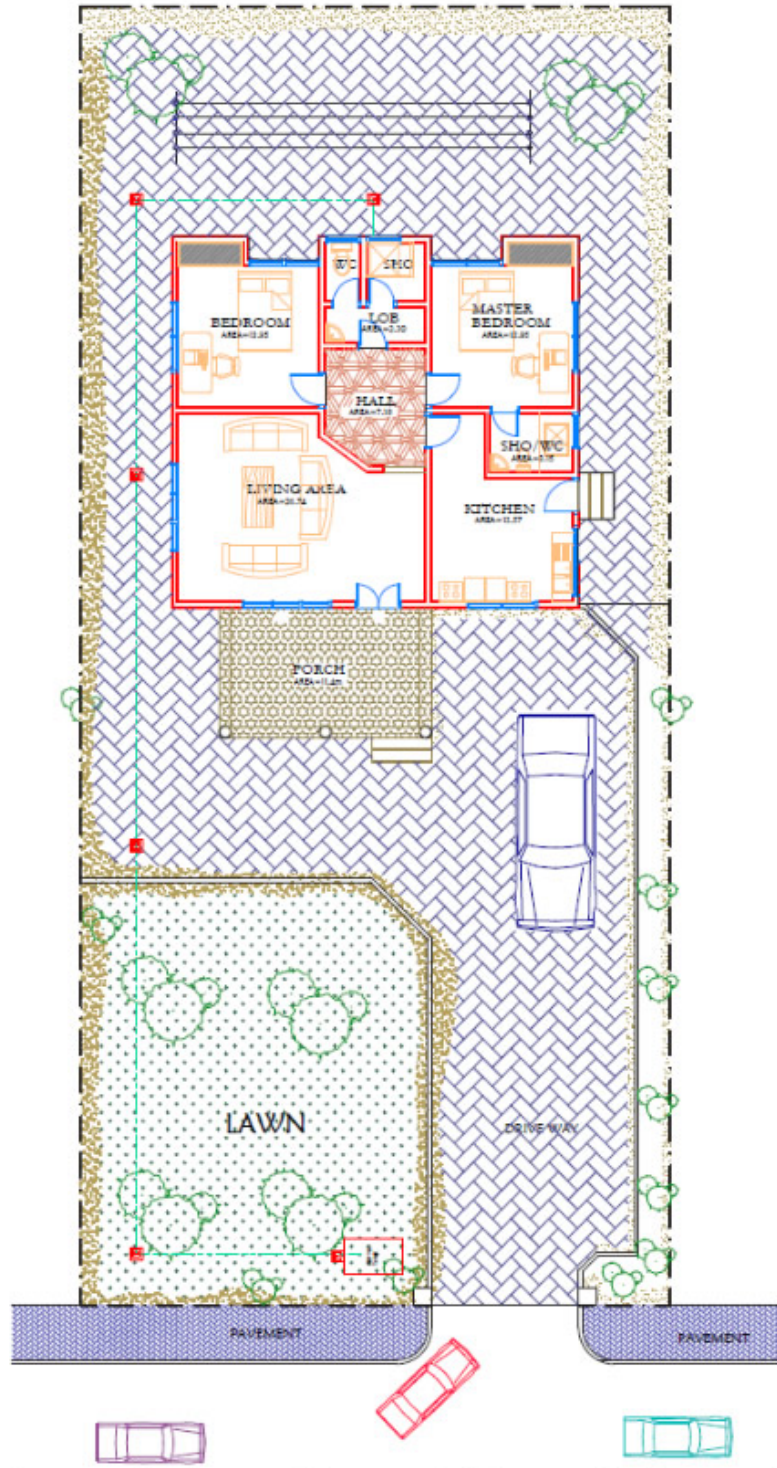
1. Aluzinc roofing sheet
2. Plastic T&G ceiling throughout
3. High quality wooden sprayed panel doors
4. One en-suite master bedroom
5. Floor tiles throughout
6. Kitchen/toilet/bathroom walls tiled
7. Kitchen sink provided
8. Kitchen store
9. Sliding windows with burglar proof locks
10. External security doors
11. Provision for built-in wardrobes/kitchen cabinets (*Additional cost for fixing*)
12. Provision for air conditioner connections
13. Provision for water heaters
14. Provision for conduct TV antennas
15. Provision for internet broadband connectivity
16. Provision for built in DSTV connectivity
17. Fence wall with gate
18. Rain gutters
19. Ground levelling with laterite



Millennium City Ltd  
www.millenniumcitygh.com

uksales@millenniumcitygh.com +442084526334  
ussales@millenniumcitygh.com +1 (917)-463-4247

Actual house features may differ slightly from images please focus on finishing list



**2 BEDROOM EXECUTIVE**  
**FLOOR LAYOUT**  
 ( floor area in m<sup>2</sup> )



Millennium City Ltd  
 www.millenniumcitygh.com

uksales@millenniumcitygh.com  
 ussales@millenniumcitygh.com

+442084526334  
 +1 (917) -463-4247

Actual house features may differ slightly from images please focus on finishing list



## Three Bedroom Standard (Detached)



Plots: 100ft x 55ft

### Finishing

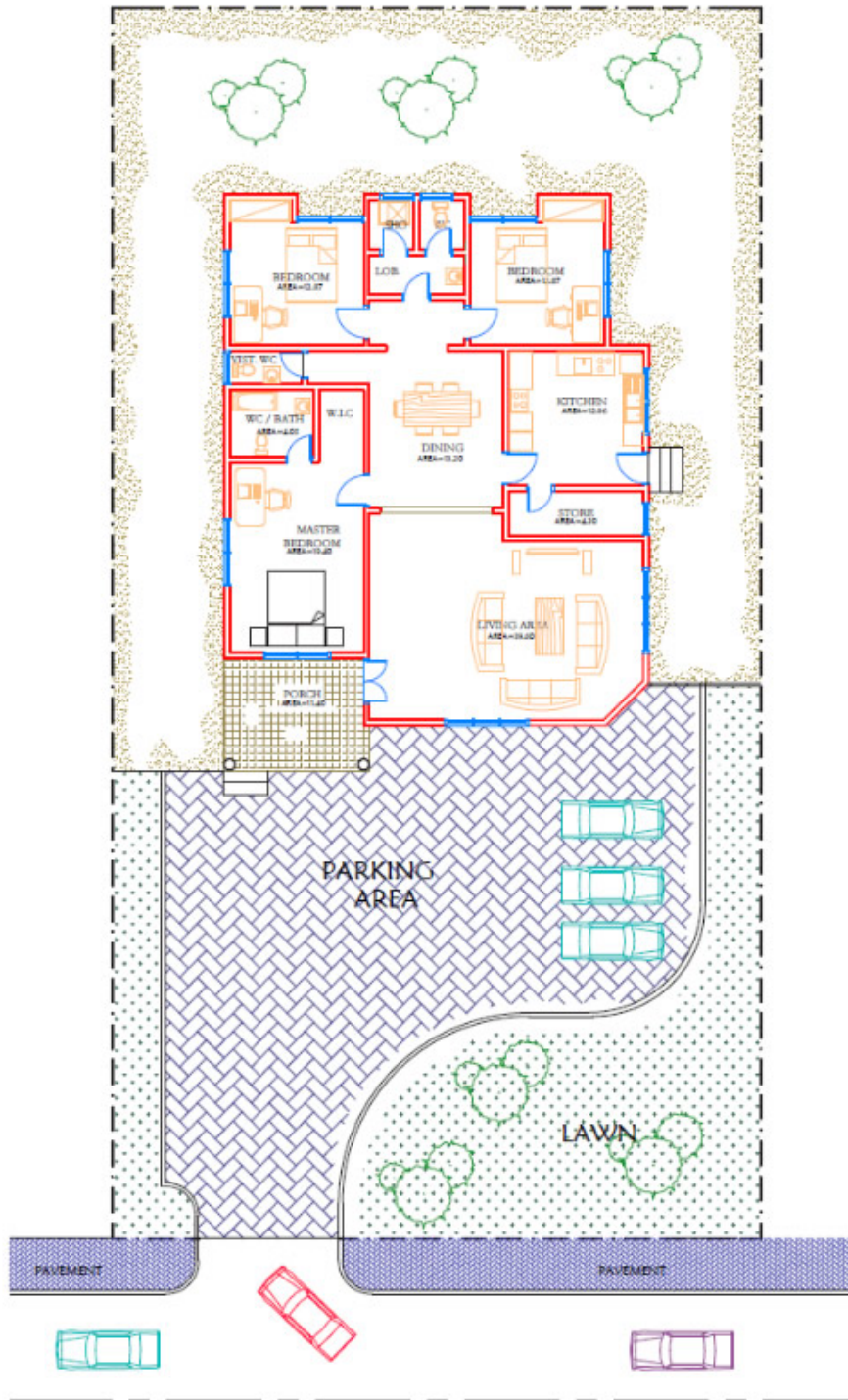
1. Aluzinc roofing sheet
2. Plastic T&G ceiling throughout
3. High quality wooden sprayed panel doors
4. One en-suite master bedroom
5. Floor tiles throughout
6. Kitchen/toilet/bathroom walls tiled
7. Kitchen sink provided
8. Naco louvre frames and glass
9. External security doors
10. Provision for built-in wardrobes/cabinet  
*(Optional fixing – additional cost)*
11. Visitor's wash room
12. Provision for conduct antennas
13. Provision for water heaters
14. Provision for air conditioner connections
15. Provision for internet broadband connectivity
16. Provision for built in DSTV connectivity
17. Fence wall with gate
18. Rain gutter
19. Ground levelling with laterite



Millennium City Ltd  
www.millenniumcitygh.com

uksales@millenniumcitygh.com +442084526334  
ussales@millenniumcitygh.com +1 (917)-463-4247

Actual house features may differ slightly from images please focus on finishing list



### 3 BEDROOM STANDARD

FLOOR LAYOUT  
( floor area in m<sup>2</sup> )



Millennium City Ltd  
www.millenniumcitygh.com

uksales@millenniumcitygh.com  
ussales@millenniumcitygh.com

+442084526334  
+1 (917)-463-4247

Actual house features may differ slightly from images please focus on finishing list



## Three Bedroom Semi Executive (Detached)



Plots: 100ft x 55ft

### Finishing

1. Aluzinc roofing sheet
2. Plastic T&G ceiling throughout
3. High quality wooden sprayed panel doors
4. All bedrooms en-suite
5. Floor tiles throughout
6. Kitchen/toilet/bathroom walls tiled
7. Kitchen sink provided
8. Sliding windows with burglar proof locks
9. External security doors
10. Provision for built-in wardrobes/cabinet  
*(Optional fixing – additional cost)*
11. Visitor's wash room
12. Provision for conduct antennas
13. Provision for water heaters
14. Provision for air conditioner connections
15. Provision for internet broadband connectivity
16. Provision for built in DSTV connectivity
17. Fence wall with gate
18. Rain gutter
19. Ground levelling with laterite

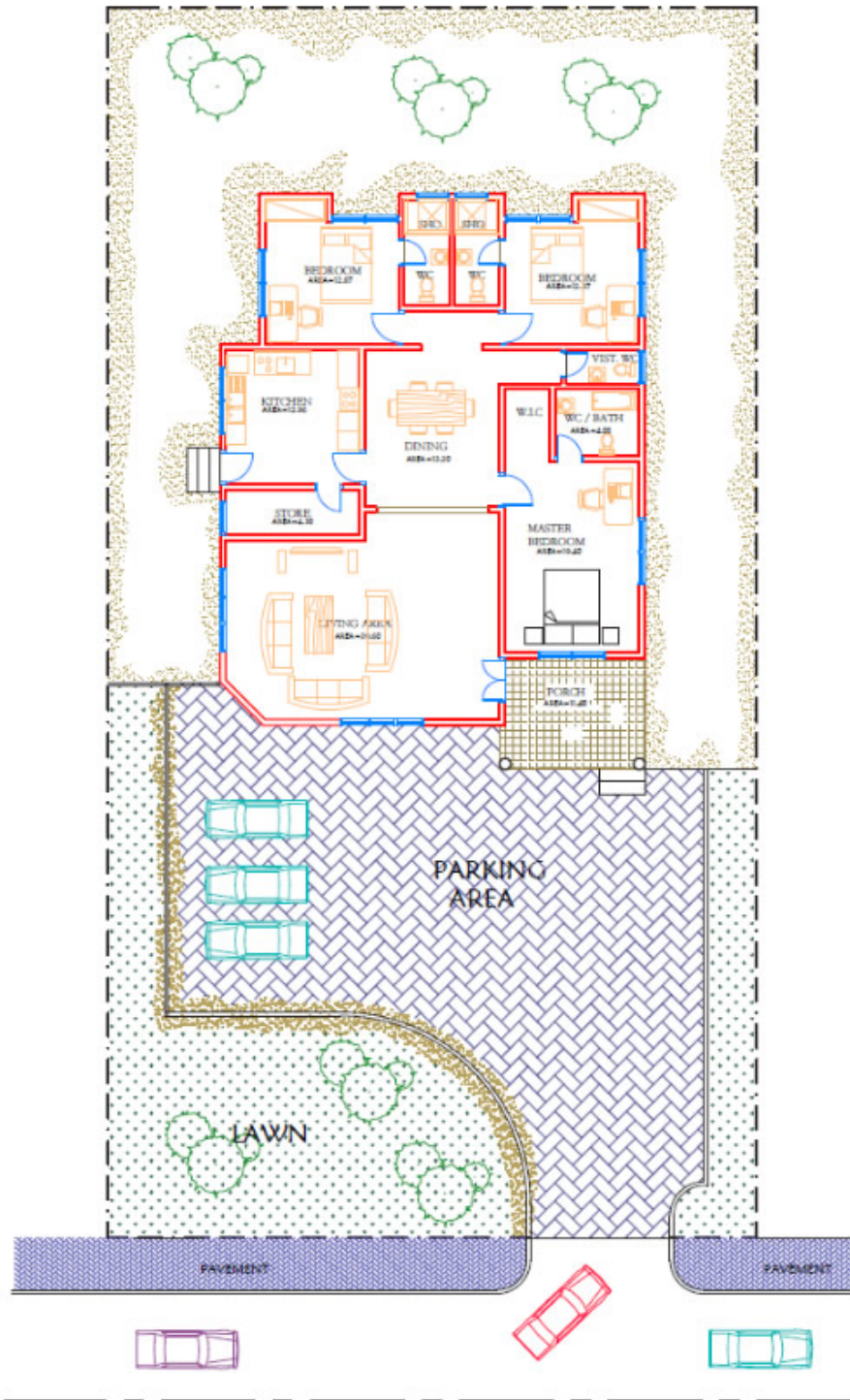


Millennium City Ltd  
www.millenniumcitygh.com

uksales@millenniumcitygh.com +442084526334  
ussales@millenniumcitygh.com +1 (917)-463-4247

Actual house features may differ slightly from images please focus on finishing list





**3 BEDROOM SEMI - EXECUTIVE**  
 FLOOR LAYOUT  
 ( floor area in m<sup>2</sup> )



Millennium City Ltd  
 www.millenniumcitygh.com

uksales@millenniumcitygh.com  
 ussales@millenniumcitygh.com

+442084526334  
 +1 (917) -463-4247

Actual house features may differ slightly from images please focus on finishing list



## Three Bedroom Executive (Detached)



Plots: 100ft x 80ft

### Finishing

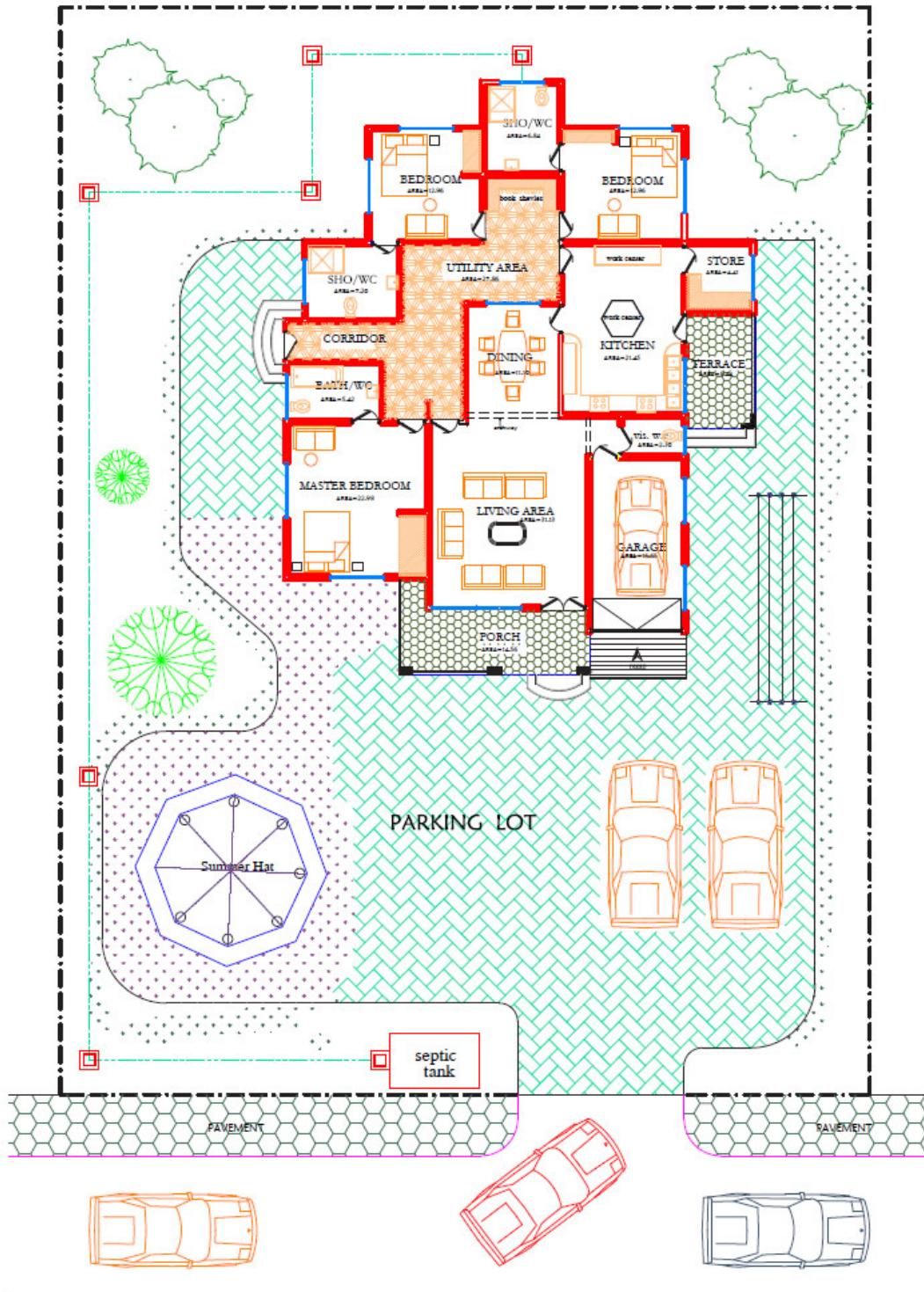
1. Aluzinc roofing sheet
2. Plastic T&G ceiling throughout
3. High quality wooden sprayed panel doors
4. All rooms en-suite
5. Floor tiles throughout
6. Kitchen/toilet/bathroom walls tiled
7. Kitchen sink provided
8. Big kitchen with store
9. Cooking yard
10. Visitor's wash room
11. Open garage
12. Sliding windows with burglar proof locks
13. External security doors
14. Provision for built in wardrobe/cabinets (fixing for a fee)
15. Provision for air conditioner connections
16. Provision for water heaters
17. Provision for conduct TV antennas
18. Provision for internet broadband connectivity
19. Provision for built in DSTV connectivity
20. Fence wall with gate
21. Rain gutter
22. Ground levelling with laterite



Millennium City Ltd  
www.millenniumcitygh.com

uk-sales@millenniumcitygh.com +442084526334  
ussales@millenniumcitygh.com +1 (917)-463-4247

Actual house features may differ slightly from images please focus on finishing list



**3 BEDROOM EXECUTIVE**  
 FLOOR LAYOUT  
 ( floor area in m<sup>2</sup> )



Millennium City Ltd  
 www.millenniumcitygh.com

uksales@millenniumcitygh.com +442084526334  
 ussales@millenniumcitygh.com +1 (917)-463-4247

Actual house features may differ slightly from images please focus on finishing list



## Four Bedroom Standard (Detached)



Plots: 2 full plots (100ft x 80ft each)

### Finishing

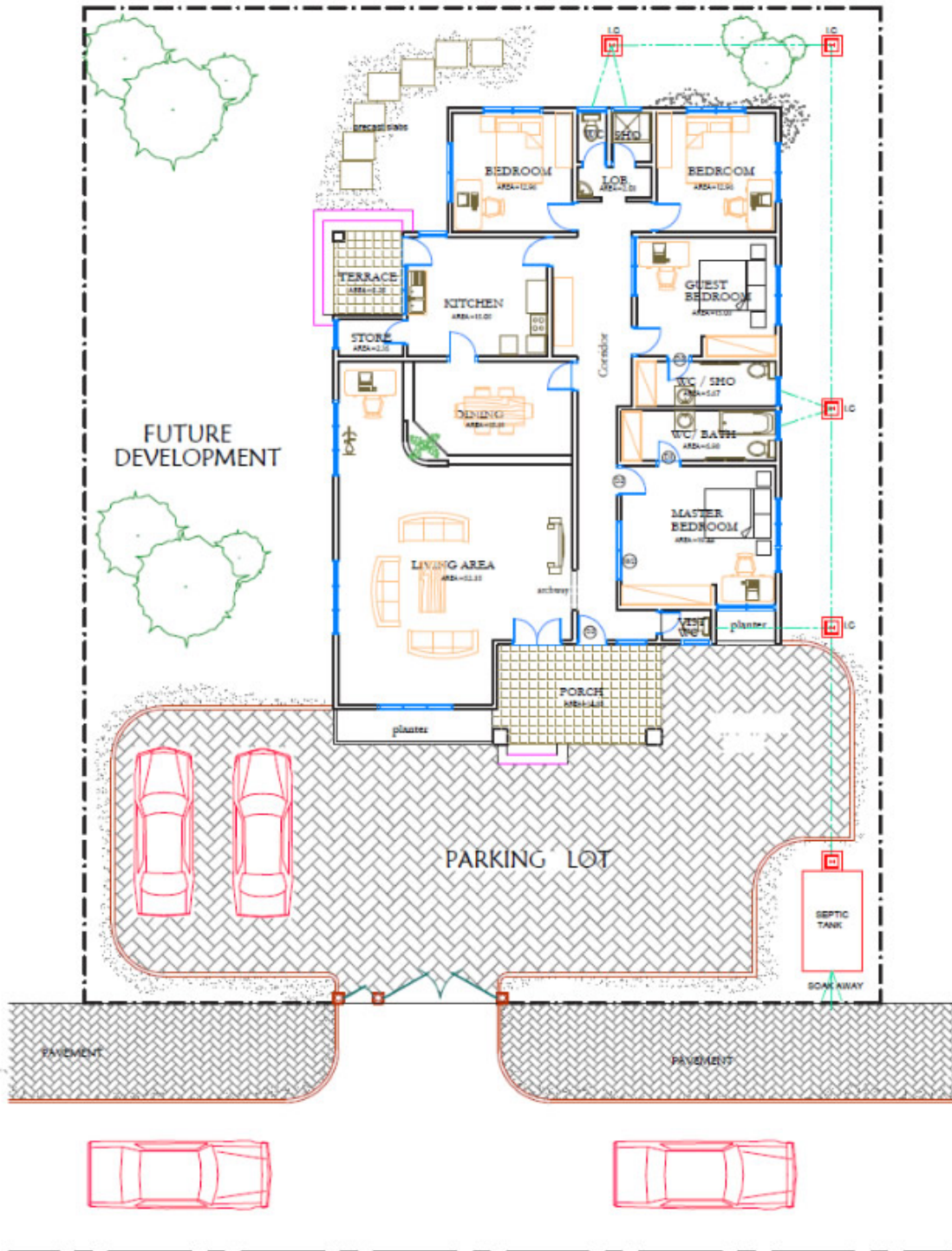
1. Aluzinc roofing sheet
2. Plastic T&G ceiling throughout
3. High quality wooden sprayed panel doors
4. Two en-suite bedrooms
5. Floors tiles throughout
6. Kitchen/toilet/bathroom walls tiled
7. Kitchen sink provided
8. Naco louvre frames and glass
9. External security doors
10. Provisions for built in wardrobes/cabinet  
*(Optional fixing – additional cost)*
11. Visitor's wash room
12. Provision for conduct antennas
13. Provision for water heaters
14. Provision for air conditioner connections
15. Provision for internet broadband connectivity
16. Provision for built in DSTV connectivity
17. Fence wall with gate
18. Rain gutter
19. Ground levelling with laterite



Millennium City Ltd  
www.millenniumcitygh.com

uksales@millenniumcitygh.com +442084526334  
ussales@millenniumcitygh.com +1 (917)-463-4247

Actual house features may differ slightly from images please focus on finishing list



**4 BEDROOM STANDARD**  
FLOOR LAYOUT  
( floor area in m<sup>2</sup> )



Millennium City Ltd  
www.millenniumcitygh.com

uksales@millenniumcitygh.com  
ussales@millenniumcitygh.com

+442084526334  
+1 (917)-463-4247

Actual house features may differ slightly from images please focus on finishing list



## Four Bedroom Executive (Detached)



Plots: 2 full plots (100ft x 80ft each)

### Finishing

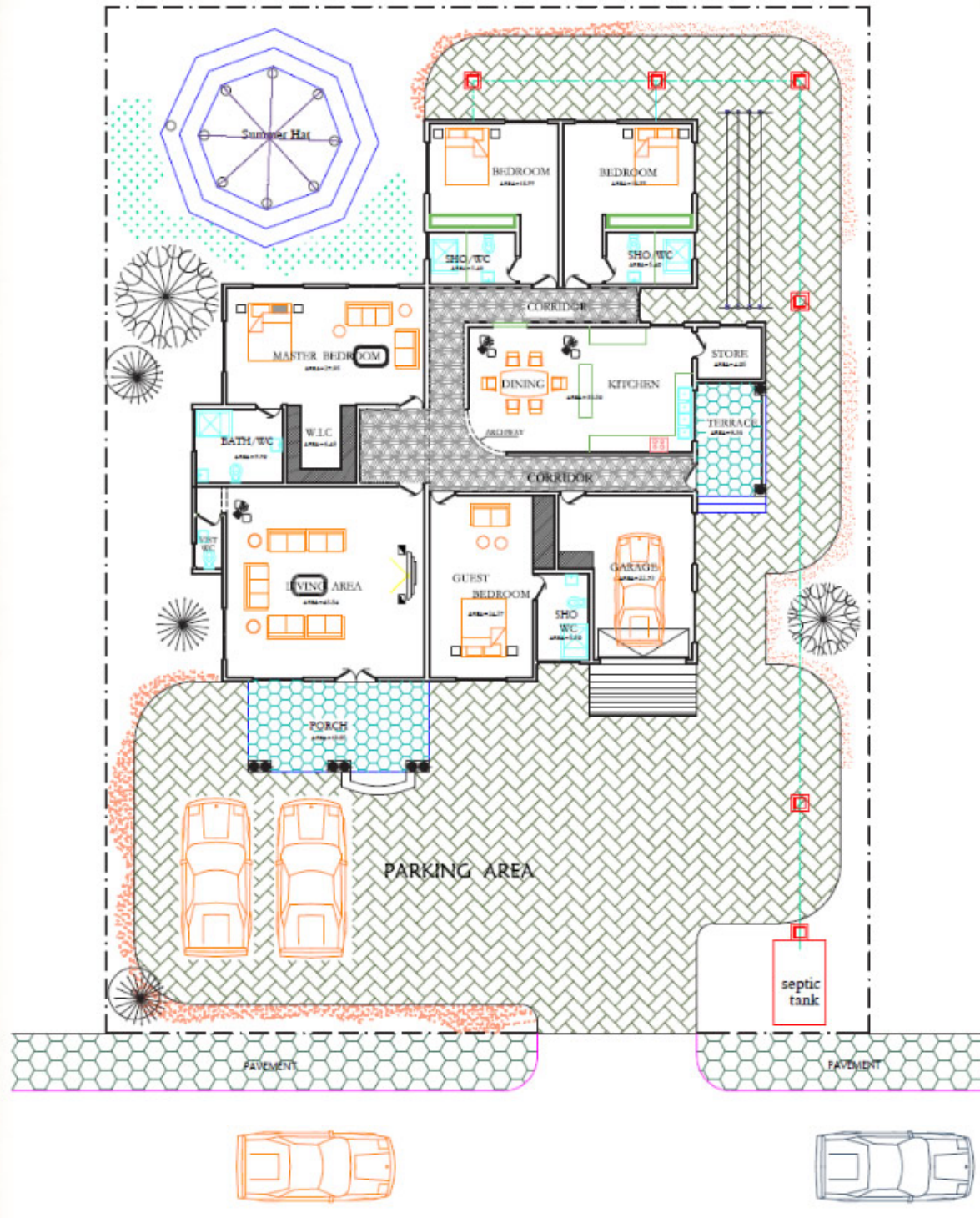
1. Aluzinc roofing sheet
2. Plastic T&G ceiling throughout
3. High quality wooden sprayed panel doors
4. All rooms are en-suite
5. Floor tiles throughout
6. Kitchen/toilet/bathroom walls tiled
7. Kitchen sink provided
8. Visitor's wash room
9. Open garage
10. Sliding windows with burglar proof locks
11. External security doors
12. Provision for built in wardrobe/cabinets (*fixing for a fee*)
13. Provision for air conditioner connections
14. Provision for water heaters
15. Provision for conduct TV antennas
16. Provision for internet broadband connectivity
17. Provision for built in DSTV connectivity
18. Fence wall with gate
19. Rain gutter
20. Ground levelling with laterite



Millennium City Ltd  
www.millenniumcitygh.com

uksales@millenniumcitygh.com +442084526334  
ussales@millenniumcitygh.com +1 (917)-463-4247

Actual house features may differ slightly from images please focus on finishing list



4 BEDROOM EXECUTIVE  
 FLOOR LAYOUT  
 ( floor area in m<sup>2</sup> )



Millennium City Ltd  
 www.millenniumcitygh.com

uksales@millenniumcitygh.com  
 ussales@millenniumcitygh.com

+442084526334  
 +1 (917) - 463-4247

Actual house features may differ slightly from images please focus on finishing list

## Testimonials

*'I have been to so many estate developers and I have been through the houses. Comparing it to this place; it is very specious...'*

*'The atmosphere alone is good... talk of the weather and you are there. Whether you have a/c or not you will still enjoy yourself. This is natural'*

*'The experience here is very relaxing. It is a very secured place and the neighbourhood is very peaceful and well set out area for families to live in.'*



### UK

Millennium City Ltd  
(formerly 21st Century Real Estate Ltd)  
AJP Business Centre  
152-154 Coles Green Road  
NW2 7HD

uksales@milleniumcitygh.com  
+44(0)20 8452 6334

### Ghana

21st Century Construction Ltd  
P.O. Box 11465  
Accra-North  
Ghana

info@milleniumcitygh.com  
+233-302-229547  
+233-302-249548

### US

Millennium City Holding Corporation  
ussales@milleniumcitygh.com  
+1 (917)-463-4247

